



Who We Are



April 2023

Hello Rene,

Welcome to the N-AbleTek Newsletter!

We are sharing this newsletter with individuals whose lives are impacted in some way by a cognitive disability. Similarly to our friends at Special Day Foundation, N-AbleTek works with individuals, families and organizations that support people who meet Florida's criteria for Intellectual Disability. We also work with Wounded Warriors who have been impacted by a traumatic brain injury.

Our mission is to help Florida's special needs children and adults enjoy the transformative power of technology.

How do we do this? As a registered 501(c)3 nonprofit, we raise funds to provide personalized training along with hardware and cognitive that we pair with individuals looking to gain greater independence in daily living tasks and more.

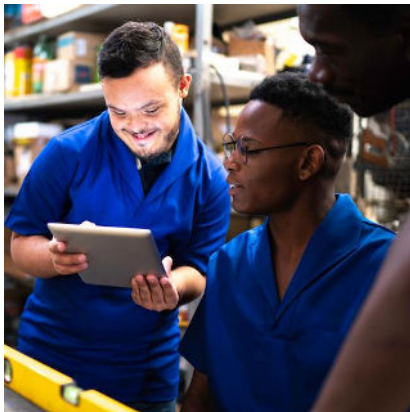
Our process begins by identifying adults and children with cognitive disabilities who likely cannot afford to purchase life-changing cognitive technology software. Next, our experts evaluate their needs, pairing them with the best cognitive technology and providing training and support along the way. N-AbleTEK maintains an ongoing relationship with all of our technology users, monitoring their progress and providing assistance as needed.

We invite you to read our newsletter and link to our website for additional

information.

[Learn More](#)

TEK TALK!



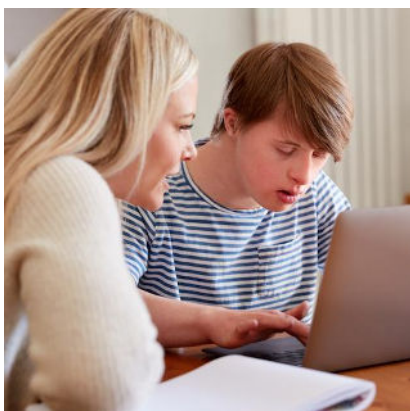
Cognitive Disability

Did you know that more than twenty-eight million people in the US have cognitive disabilities such as intellectual disability; severe and persistent mental illness; brain injury; stroke; and neurodegenerative disorders such as Alzheimer's disease?

Having a cognitive disability can disrupt the way in which you learn functional life skills and limit your ability towards independent living.

Please feel free to access the link below to learn more!

[Read More](#)



Why does N-AbleTek, Inc. refer to the use of Cognitive Technology instead of Assistive Technology?

We believe the definition of:

Assistive Technology is limiting.

AND

Applied Cognitive Technology is

liberating.

Assistive Technology is defined as:

“any item, piece of equipment, or product system, whether acquired commercially off the shelf, modified, or customized, that is used to increase, maintain, or improve the functional capabilities of individuals with disabilities”*.

Assistive Technology is tied to improving the functioning of a person with a disability and is almost always referring to technology that addresses a specific deficit**. If you can't walk, you use a wheelchair, vision deficit, you use a magnifier, hearing deficit, you use a vibrating alarm clock, etc.

For anyone supporting a person with Intellectual Disabilities or other Cognitive Disabilities, Assistive Technology defined in this manner falls short of identifying supports that will help a person hone the various life skills needed for greater independence and a desired quality of life.

“Applied Cognitive Technology”, on the other hand, is considered “an assortment of technology that are relevant to the lives of people with disabilities”*.**

With this understanding, we all use Applied Cognitive Technology!

We use it every day to enhance our lives. We use navigation systems in our cars, smartphones, all sorts of applications and voice assistants to help us with just about everything else!

N-AbleTek, Inc. has embraced this concept and sees the value of finding the right Cognitive Technology for

each person in our program, so that they may enjoy the transformative power of technology along their journey in life.

References:

*S.2561 - Technology-Related Assistance for Individuals with Disabilities Act of 1988

<https://www.congress.gov/bill/100th-congress/senate-bill/2561/text>

** Wehmeyer, M.L., Tanis, S., Davies, D.K., Stock, S.E. (2021). The Role of Applied Cognitive Technology and Assistive Technology in Supporting the Adaptive Behavior of People with Intellectual Disability. In Lang, R., Sturmey, P. (eds) Adaptive Behavior Strategies for Individuals with Intellectual and Developmental Disabilities. Autism and Child Psychopathology Series. Springer, Cham.

https://doi.org/10.1007/978-3-030-66441-1_9

*** Wehmeyer, M.L., & Shogren, K.A. (2013). Establishing the field of applied cognitive technology. *Inclusion*, 1, 91-94.



Learn about some places who are using cognitive technology through N-AbleTek

Students at various places are using the hardware and software provided by N-AbleTek to increase their independence. Click below to learn about some of these programs.

USF U_Matter Program

FGCU Soaring Eagles Academy

The Haven Academy

Adventure For All

Contact Us

N-AbleTek, Inc.



11523 Palmbrush Trail, Suite 196

Lakewood Ranch, FL, 34202

Phone: 941-208-9289

Contact Us



Share This Email



Share This Email



Share This Email

A COPY OF THE OFFICIAL REGISTRATION AND FINANCIAL INFORMATION MAY BE OBTAINED FROM THE DIVISION OF CONSUMER SERVICES BY CALLING TOLL-FREE (800-435-7352) WITHIN THE STATE. REGISTRATION DOES NOT IMPLY ENDORSEMENT, APPROVAL, OR RECOMMENDATION BY THE STATE. REGISTRATION CH63699

N-AbleTek, Inc. | 11523 Palmbrush Trail, Ste 196, Lakewood Ranch, FL 34202 www.n-abletek.org

[Unsubscribe team@n-abletek.org](mailto:unsubscribe@n-abletek.org)

[Update Profile](#) | [Constant Contact Data Notice](#)

Sent by info@n-abletek.org powered by



Try email marketing for free today!